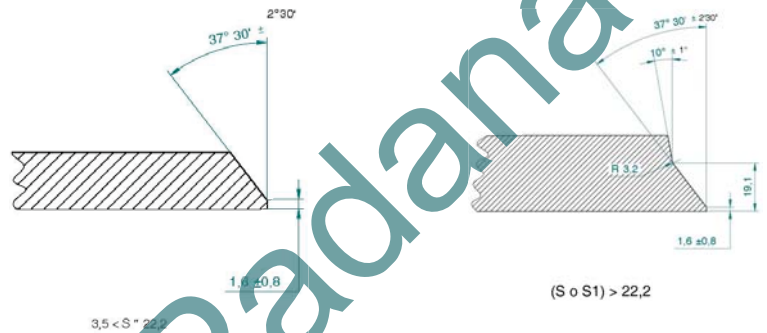
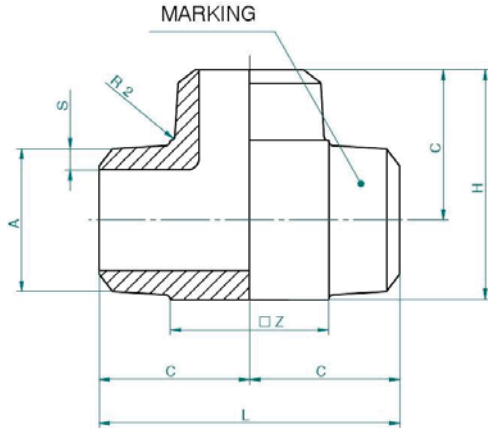


Tees STD-TB-HPU-5002 SH. 2 OF 29

DNP	A	C	S	S	S	S	Mass	Z	H	L	Thk
			STD	XS	160	XXS	Kg				
1"	33.4	38.1	3.38	4.55	6.35	9.09	0.46	35.4	55.8	76.2	35.4
1.1/2"	48.3	57.2	3.68	5.08	7.14	10.20	1.40	52.3	83.35	114.4	52.3
2"	60.3	63.5	3.91	5.54	8.71	11.10	2.40	64.3	95.65	127.0	64.3
3"	88.9	85.7	5.49	7.62	11.10	15.20	7.10	92.8	132.1	171.4	92.8
4"	114.3	104.8	6.02	8.56	13.50	17.10	13.70	118.3	163.95	209.6	118.3
6"	168.3	142.9	7.11	11.00	18.20	21.90	39.90	173.3	229.55	285.8	173.3
8"	219.1	177.8	8.18	12.70	23.00	22.20	82.20	224.1	289.85	355.6	224.1
10"	273.0	251.9	9.27	12.70	28.60	-	112.70	278.0	390.9	503.8	278.0

Notes:

- 1) Dimensions: ANSI B 16.9.
- 2) Construction: seamless.
- 3) Tolerances: ANSI B 16.9.
- 4) Materials e tests: per spc. G510 and as specified in p.o.
- 5) Dimensions in mm.


Reducing Tees STD-TB-HPU-5002 SH. 3 OF 29

DNP 1	DNP 2	A	A1	C	M	STD		XS		SCH 160		XXS		Mass	Z	H	L	Z1
						S	S1	S	S1	S	S1	S	S1	Kg				
2"	1"	60.3	33.4	63.5	50.8	3.91	3.38	5.54	4.55	8.71	6.35	11.1	9.09	2.0	37.4	82.95	127	64.3
2"	1.1/2"	60.3	48.3	63.5	60.3	3.91	3.68	5.54	5.03	8.71	7.14	11.1	10.20	2.2	52.3	92.45	127	64.3
3"	1.1/2"	88.9	48.3	85.7	73.0	5.49	3.68	7.62	5.03	11.1	7.14	15.2	10.23	6.2	52.3	119.4	171.4	92.8
3"	2"	88.9	60.3	85.7	76.2	5.49	3.91	7.62	5.54	11.1	8.71	15.2	11.10	6.2	64.3	122.6	171.4	92.8
4"	1.1/2"	114.3	48.3	104.8	85.7	6.02	3.68	8.56	5.03	13.5	7.14	17.10	10.20	11.5	52.3	144.85	209.6	118.3
4"	2"	114.3	60.3	104.8	88.9	6.02	3.91	8.56	5.54	13.5	8.71	17.10	11.10	11.7	64.3	148.05	209.6	118.3
4"	3"	114.3	88.9	104.8	98.4	6.02	5.49	8.56	7.62	13.5	11.1	17.10	15.20	12.6	92.9	157.55	209.6	118.3
6"	3"	168.3	88.9	142.9	123.8	7.11	5.49	11.0	7.62	18.2	11.1	21.90	15.20	34.4	92.9	210.45	285.8	173.3
6"	4"	168.3	114.3	142.9	130.2	7.11	6.02	11.0	8.56	18.2	13.50	21.90	17.10	35.6	118.3	216.85	285.8	173.3
8"	3"	219.1	88.9	177.8	152.4	8.19	5.49	12.7	7.62	23.0	11.10	22.20	15.20	70.4	93.9	264.45	355.6	224.1
8"	4"	219.1	114.3	177.8	155.6	8.19	6.02	12.7	8.56	23.0	13.50	22.20	17.10	71.4	119.3	267.65	355.6	224.1
8"	6"	219.1	168.3	177.8	168.3	8.19	7.11	12.7	11.0	23.0	18.20	22.20	21.90	75.8	173.3	280.35	355.6	224.1
10"	4"	273	114.3	215.9	184.1	9.27	6.02	12.7	8.56	28.6	13.50	-	-	98.5	119.3	323.1	431.8	278.0
10"	6"	273	168.3	215.9	193.7	9.27	7.11	12.7	11.0	28.6	18.20	-	-	102.0	173.3	332.7	431.8	278.0
10"	8"	273	219.1	215.9	203.2	9.27	8.18	12.7	12.7	28.6	23.0	-	-	106.5	224.1	342.2	431.8	278.0

Notes:

- 1) Dimensions: ANSI B 16.9 and as shown here.
- 2) Construction: seamless.
- 3) Tolerances: ANSI B 16.9.
- 4) Materials e tests: per spc. G510 and as specified in p.o.
- 5) Dimensions in mm.

