

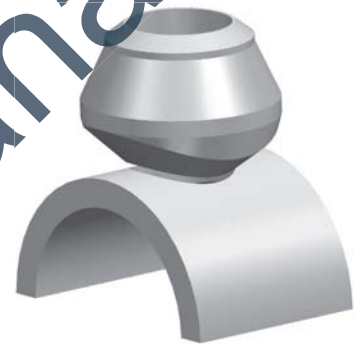
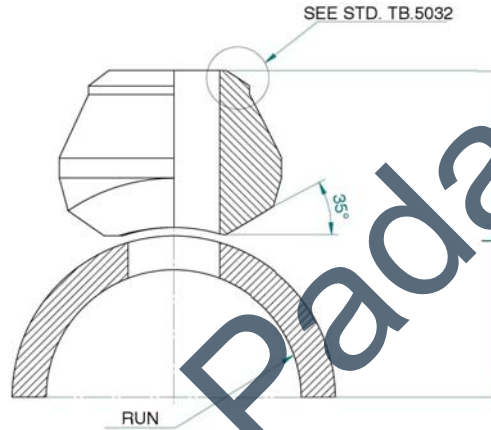
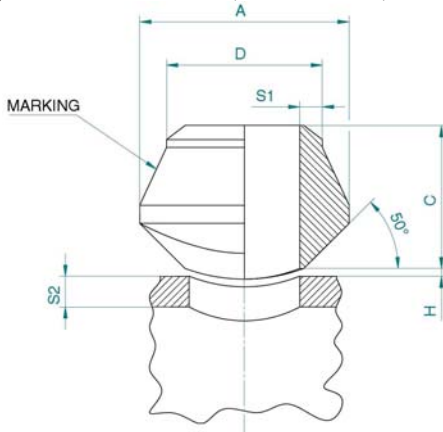
Weldolets STD-TB-5002 SH. 7 OF 29

DNP	DNP 2	A	C	D	S1	H	Mass	
Branch								Kg
1/2" a 10	1/4"	25.4	14.3	13.7	At customer's discretion	1.6	0.04	
3/4" a 10	1/2"	34.9	28.6	21.3		1.6	0.11	
1" a 10	3/4"	44.5	31.8	26.7		1.6	0.32	
1.1/2" a 10	1"	50.8	38.1	33.4		1.6	0.38	
2" a 10	1.1/2"	69.9	50.8	48.3		1.6	0.80	
3" a 10	2"	81.0	55.6	60.3		1.6	0.95	

L	DNP 2 Branch	DNP 1 RUN									
		1/2"	3/4"	1"	1.1/2"	2"	3"	4"	6"	8"	10"
		25.4	28.6	31.8	39.7	46.0	60.3	73.0	100.0	125.4	152.4
	1/2"	-	42.9	46.0	54.0	60.3	74.6	87.3	114.3	139.7	166.7
	3/4"	-	-	49.2	57.2	63.7	77.8	90.5	117.5	142.9	169.9
	1"	-	-	-	63.5	69.9	84.1	96.8	123.8	149.2	176.2
	1.1/2"	-	-	-	-	81.0	96.8	109.5	136.5	161.9	188.9
	2"	-	-	-	-	-	101.6	114.3	141.3	166.7	193.7

Notes:

- 1) Dimensions and design: ANSI B 16.3 & B 31.1 and as shown here.
- 2) Construction: forged.
- 3) Tolerances: ANSI B 16.9.
- 4) Materials e tests: per spc. G510 and as specified in p.o.
- 5) Dimensions in mm.
- 6) Design conditions: 292 bars at 80°C; 258 bars at 160°C; 221 bars at 250°C.


Thredolets STD-TB-5002 SH. 8 OF 29

DNP	DNP 2	A	B	C	D	H	Mass	
Branch								Kg
3/4" a 10	1/2"	44.5	19.1	31.8	39.7	1.6	0.2	
1" a 10	3/4"	50.8	25.4	36.5	46.0	1.6	0.3	
1.1/2" a 10	1"	61.9	33.3	39.7	57.2	1.6	0.6	
1.1/2" a 10	1.1/4"	69.9	38.1	41.3	65.1	1.6	0.7	
2" a 10	1.1/2"	82.6	49.2	42.9	76.2	1.6	0.9	
3" a 10	2"	103.2	69.9	52.4	92.1	1.6	2.3	

Notes:

- 1) Dimensions and design: ANSI B 16.9 & B 31.1 and as shown here.
- 2) Construction: forged.
- 3) Tolerances: ANSI B 16.11 ANSI B 1.20.1 (ON THREAD).
- 4) Materials e tests: per spc. G510 and as specified in p.o.
- 5) Dimensions in mm.
- 6) Design conditions: 292 bars at 80°C; 268 bars at 160°C; 221 bars at 250°C.

